



**ABUTORAAB WORLD HUMANITY CHARITABLE FOUNDATION**

**"We Stand Beside , With The Light of Hope"**

12A - ABECA0292NE20251

80G - ABECA0292NF20251

UDYAM-WB-13-0129003

LEI: 648812YITN97004TA762

CIN - U88900WB2025NPL283802

DARPAN - WB/2025/0883989

TAN - CALA41930A

PAN - ABECA0292N

# **ABUTORAAB WORLD HUMANITY CHARITABLE FOUNDATION**

**PROJECT: ORPHENAGE VILLAGES & MUNICIPALITIES IN WEST BENGAL**

**(MISSION – THE NEW HEAVEN)**

## **Project Summery**

**Our Humanitarian Promise — A New Life for Every Orphan Child**

This project is not just a shelter, it is a family — a dream — a future of every Orphan. The children who will come here are not orphans, they are not alone, they are not abandoned, and rather they will become a part of our family.

We will treat every child as our own, protecting them with love, adequate care and dignity. Our effort will be bringing back the smile on their face, lighting new dreams in their eyes, removing fear from their hearts and filling their hearts with the light of hope & prosperity. This is our first and foremost responsibility. In this project, every child will receive — a safe and secure home and nutritious food every day, quality education and learning support, complete medical and health care, mental support and counselling, freedom to play, create and enjoy their childhood to their heart's content.



[www.abutoraabwhcfoundation.com](http://www.abutoraabwhcfoundation.com)  
[abutoraabwhcfoundation@gmail.com](mailto:abutoraabwhcfoundation@gmail.com)  
+918927549798 / +918583006433  
+917719129969 / +919083307959



ABUTORAAB WHC FOUNDATION  
3dr FLOOR, KE SHABNAGAR  
TETULTOLA, BERHAMPORE  
MURSHIDABAD. WE ST BENGAL 742102  
INDIA. NEAR PASSPORT OFFICE

We believe—The child who seems lonely, sad, or helpless today, can become tomorrow's leader, teacher, doctor, or successful human being if we provide them a with a chance to prosper.

Every wall, every room, every corner of this project is built with love, affection, and protection. Here, children will not just survive — they will grow, learn and rise. We will walk beside them in every step of life— from darkness to light, from sadness to dreams, from helplessness to strength.

## Our Promise

- **No Child Will Cry Alone**
- **No Child Will Be Left Behind**
- **No Child Will Ever Feel Abandoned**

## **EXECUTIVE SUMMARY**

The (**THE NEW HEAVEN**) is a visionary humanitarian initiative designed to create a safe, nurturing and empowering environment for orphaned, abandoned, and vulnerable children.

This project outlines the architectural concept, operational structure, social impact, sustainability model, and implementation roadmap of a modern, ethically-driven orphanage system designed with visual elegance and real-world functionality.

Our mission is to restore childhood, build futures, and offer unwavering support to children in need through holistic development programs rooted in education, healthcare, emotional wellbeing, and long-term empowerment.

### **VISION STATEMENT**

**“To create a heaven like world where every orphan child receives protection, dignity, opportunity, and unconditional love—shaped within a system as beautiful and hopeful as the future they deserve.”**



## **MISSION STATEMENT**

- To provide secure housing, nutritious food, and modern healthcare.
- To ensure quality education and skill development.
- To cultivate emotional resilience through psychosocial support.
- To build a sustainable model that transforms lives for generations.

## **ARCHITECTURAL CONCEPT**

The infrastructure of **THE NEW HEAVEN** blends functionality with warmth, designed to feel like a home first and an institution second. The entire campus is designed with an emotionally expressive concept.

### **Key Facilities:**

- **Residential Blocks** – Safe, ventilated, child-friendly living spaces.
- **Central Learning Hub** – Classrooms, digital labs, libraries.
- **Health & Wellness Center** – Clinic, therapy rooms, counselling services.
- **Recreation Zone** – Playgrounds, gardens, art studio, music room.
- **Administration & Community Hall** – For training, events, donor gatherings.
- The main entrance will feature a symbolic sculpture of a child standing at the bow of a ship—representing hope and a new journey.
- Surrounding areas include lush green gardens and natural tranquillity.
- A "Hope Tower" stands at the centre, symbolising dreams and future aspirations.
- Child-friendly, colourful, safe residential blocks.
- Natural daylight, fresh air and wide open playgrounds.



## **Introduction**

**THE NEW HEAVEN** is a humanitarian child rehabilitation project designed to provide a safe home, education, healthcare, moral development, skill training, and a stable future for 1,000 underprivileged children—including street children, orphans, and children at social or economic risk. This project is not just a shelter; it is a future-building center where a child receives love, dignity, care, and opportunity.

The project includes residential facilities, advanced education systems, hospital care, skill-development units, recreation areas, and a complete value-based upbringing environment. The entire infrastructure is designed with a cinematic architectural concept to create a peaceful, inspiring, and emotionally uplifting environment.

## **Vision, Mission & Values**

### **Vision**

To create a compassionate world where every child lives safely, learns with dignity, grows with skills, and contributes positively to society.

### **Mission**

- **To fully rehabilitate 1,000 marginalised children.**
- **To build responsible future citizens through education, healthcare, skill development and moral guidance.**
- **To establish a sustainable and modern child development model.**

### **Values**

- **Humanity**
- **Safety**
- **Morality**
- **Love**
- **Discipline**
- **Equal Opportunity**

## **Infrastructure Plan for 1,000 Children**

### **The 30-Acre Campus Includes:**

- **Residential Blocks- 2 (For Boys & Girls)**
- **Educational Block - 2**
- **Healthcare Block - 2**
- **Skill Development Block - 2**
- **Community Hall - 2**
- **Dining Hall - 2**



- Meditation Hall – 2
- Library Hall – 2
- Swimming Pool – 2
- Garden Area – 2
- Green Environment Areas - 2
- Solar & Organic Farm Zones -2
- Playground & Recreation Zones– 4
- 10- Acre for Agriculture Unit

#### **Residential Block (500+500 Beds)**

- 2 Blocks, each with 500+500 Beds
- Each Block Includes:
  - Wash Rooms
  - Common Room
  - Caretaker Room
  - Safety System
  - Dining Hall

#### **Food System for 1,000 Children**

##### **Daily Meals**

- 2 Full Meals
- 1 Breakfast
- 1 Snack

##### **Menu Plan**

- Breakfast: Raw Chickpeas/Egg/Milk/Honey/ Juice/Fruits/Soup/ Bread
- Lunch: Rice/Fried Rice/Roti/Meat/Vegetables/Fish/Egg/Soya Bean
- Dinner: Rice/Roti/Fried Rice/Meat/Fish/Egg/Vegetables/Soya Bean
- Snacks: Butter Toast/Veg Soup/Biscuits
- Nutrition will be planned according to age and health conditions.



## **Education System**

### **Facilities**

- **30 Modern Classrooms**
- **3 computer Labs (30 computers each)**
- **Library with 10,000 Books**

### **Curriculum**

- **Bengali, English, Mathematics, Science**
  - **Computer Education**
  - **Moral & Value Education**
  - **Life Skills**
  - **Arts & Culture**
- 

## **Healthcare Facility**

### **15-bed Hospital**

- **4 Doctors**
- **10 Nurses**
- **Pathology Unit**
- **Emergency Care**
- **Vaccination Program**

### **Health Monitoring:**

- **Monthly Health Check-ups**
  - **Mental Health Support**
- 

## **Skill Development Program**

### **For Children (Age 3 YEAR TO 18 YEAR)**

- **IT Training**
- **Carpentry**
- **Tailoring**
- **Art & Craft**
- **Music Training**
- **Spoken English**
- **Photography & Media**



**Children will be prepared for future jobs or entrepreneurship.**

---

#### **Daily Practice & Moral Development**

- **Morning Prayer & Motivational Talk**
  - **Daily 30-minute Moral Education**
  - **Health Practice & Yoga**
  - **Reading Habits**
- 

#### **Recreation Facilities**

- **Large Playground**
  - **Music Room**
  - **Theatre Room**
  - **Art Gallery**
  - **Children's Park**
- 

#### **Dining Hall**

- **1,200-Seat Dining Hall**
  - **Modern Kitchen System**
  - **Safe Food Storage Units**
- 

#### **Staff Structure**

- **Teachers: 60**
  - **Caretakers: 50**
  - **Cooks: 30**
  - **Housekeepers: 30**
  - **Security Guards: 40**
  - **Doctors/Nurses: 10**
  - **Administrative Officers: 20**
- 



### **Child Admission Process**

- **Field-Based Identification of Children**
  - **Age Verification**
  - **Health Screening**
  - **Family Verification (if applicable)**
  - **Complete Rehabilitation Documentation**
- 

### **Job & Career Guidance System**

- **Career Counseling**
  - **Job Training**
  - **Partnership With Companies**
  - **Internship Opportunities**
  - **Entrepreneurship Training**
- 

### **Sustainability Model**

- **Solar Energy Farm (50% Power Supply)**
  - **Organic Vegetable Farm**
  - **Dairy Unit**
  - **CSR Funding Program**
  - **Income Units (Tailoring, Carpentry, IT Services)**
- 

### **Security Features**

- **24/7 CCTV Monitoring**
  - **Fire Safety System**
  - **Biometric Entry**
  - **Security Patrol System**
- 

### **Social Impact of 1000 Children**

**This project will transform 1,000 children into:**

- **Educated Individuals**
- **Skilled Youth**
- **Self-reliant Citizens**





- **Morally Strong Personalities**
- **Future Nation Builders**

A community, a district—even a nation—can change through these 1,000 empowered children.

---

#### **Special Declaration:**

**“We will nurture 1,000 children into responsible, capable individuals and ensure they are established in good positions in life.”**

This is not just a promise—this is our commitment.

---

## **IMPLEMENTATION ROADMAP**

### **Phase 1 — Concept & Land (Months 1–3)**

- Identification and selection of suitable project site
- Completion of legal due-diligence and land acquisition
- Preparation of master plan and architectural designs
- Government and regulatory approvals

### **Phase 2 — Construction (Months 4–14)**

- Development of core infrastructure (buildings, dormitories, classrooms, admin block)
- Installation of utilities (water, electricity, sanitation, solar systems)
- Interior development, furnishing, and safety systems
- Landscape development and recreational areas

### **Phase 3 — Recruitment & Training (Months 10–15)**

- Recruitment of caregivers, teachers, healthcare professionals, counsellors
- Hiring administrative, security, kitchen, and support staff
- Comprehensive training on child protection, safety, psychology, and first aid
- Development of SOPs (Standard Operating Procedures) for daily operations

### **Phase 4 — Child Enrolment (Months 15–18)**

- Identification and documentation of orphan and vulnerable children
- Initial intake procedures and health check-ups
- Psychological and educational assessments
- Orientation, accommodation, and integration into the program



## Phase 5 — Full Operations (Month 18 onwards)

- Full-scale education programs (formal + non-formal)
  - Medical care, nutrition plans, mental health support
  - Life skills, extracurricular and vocational training
  - Community engagement programs
  - Continuous monitoring, reporting, and impact evaluation
- 

## PROJECT COST ESTIMATION

A comprehensive cost structure for Project **THE NEW HEAVEN** (1,000 Children Capacity) has been designed based on construction, operations, staffing, utilities, healthcare, and sustainability planning.

### 1. Land & Infrastructure Development

Items	Cost (INR)
Land Purchase(30 Acres)	22.50 Cr
Land Development (30 Acres)	15.00 Cr.
Cinematic Architectural Design	3.00 Cr.
Roads, Drainage & Utilities	7.00 Cr.
Landscaping, Gardens & Playgrounds	5.00 Cr.
Boundary Wall & Security Gates	2.00 Cr.
<b>Subtotal</b>	<b>54.50 Cr.</b>

---

### 2. Residential Block Construction (1000 Beds)

Items	Cost (INR)
10 Residential Buildings	250.00 Cr.
Furnishing & Bedding	5.00 Cr.
Community Halls – 2 Nos.	1.00 Cr.
Safety Systems	3.00 Cr.
<b>Subtotal</b>	<b>259.00 Cr.</b>

---



### 3. Education Facilities

Items	Cost (INR)
30 Classrooms Construction	8.00 Cr.
8 Computer Labs (90 PCs)	4.00 Cr.
10,000 Book Library	1.00 Cr.
Smart Boards & Equipment	2.00 Cr.
<b>Subtotal</b>	<b>15.00 Cr.</b>

---

### 4. Healthcare Facility (15-Bed Hospital)

Items	Cost (INR)
Hospital Building	10.00 Cr.
Medical Equipment	4.00 Cr.
Pharmacy & Pathology Setup	2.00 Cr.
<b>Subtotal</b>	<b>16.00 Cr.</b>

---

### 5. Skill Development Centre

Items	Cost (INR)
IT Training Lab	2.00 Cr.
Carpentry Workshop	2.00 Cr.
Tailoring Center	1.50 Cr.
Music & Arts Studio	2.00 Cr.
Spoken English Class Room	0.50 Cr.
<b>Subtotal</b>	<b>8.00 Cr.</b>



## 6. Dining Hall & Food System

Items	Cost (INR)
500-Seater Dining Hall X 2 Nos.	5.00 Cr.
Industrial Kitchen Setup	2.00 Cr.
Cold Storage & Food Logistics	2.50 Cr.
<b>Subtotal</b>	<b>9.50 Cr.</b>

---

## 7. Recreational Facilities

Items	Cost (INR)
Theatre Room	1.50 Cr.
Music Room Setup	0.50 Cr.
Art Gallery	0.50 Cr.
Play Ground Equipment	2.00 Cr.
<b>Subtotal</b>	<b>4.50 Cr.</b>

---

## 8. Administration & Staffing (1 Year Operations)

Items	Cost (INR)
Staff Salaries	6.00 Cr.
Training & HR System	0.50 Cr.
Office Equipment	0.50 Cr.
<b>Subtotal</b>	<b>7.00 Cr.</b>

---



## 9. Sustainability Systems

Items	Cost (INR)
Solar Power Plant (50% Load)	8.00 Cr.
Organic Farm Setup	2.50 Cr.
Dairy Unit	2.50 Cr.
Rain Water Harvesting	0.50 Cr.
<b>Subtotal</b>	<b>13.50 Cr.</b>

## 10. Security & Monitoring

Items	Cost (INR)
24/7 CCTV System	1.50 Cr.
Biometric Entry System	0.50 Cr.
Fire Safety System	2.00 Cr.
<b>Subtotal</b>	<b>4.00 Cr.</b>

## Total Project Cost Estimate

**₹ 391.00 Crores (Approx.)**

### Conclusion

Project **The New Heaven** of **Abuturaab World Humanity Charitable Foundation** is not just an infrastructure—it is a new chapter of humanity. Here, a child will find a new life, new dreams and a new future. We believe that the children we uplift today will become the driving force of tomorrow's society and nation.

We seek everyone's support to make this noble dream a reality—with love, humanity and responsibility.

**For SHUBHASHISH SARKAR & CO.**

**Chartered Accountants**



*Shubhashish Sarkar*

**Proprietor**

**SHUBHASHISH SARKAR**

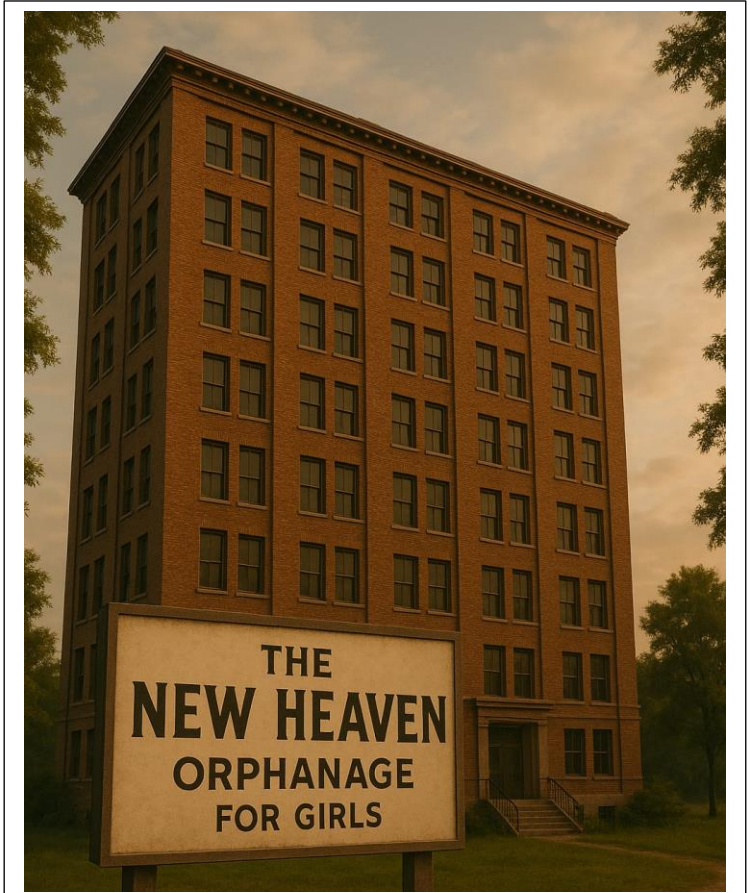
**Membership No.065193**



AWHCF is aiming at opening an Orphanage for boys which is a residential home providing Care, Shelter, Education, and Life Skills for Children lacking parental support due to death, abandonment, or difficult family situations, aiming to offer Stability, Health & Development, though modern approaches often focus on family reunification or strengthening family ties rather than institutionalisation, as seen with organisations providing Homes, Schooling & Vocational Training.



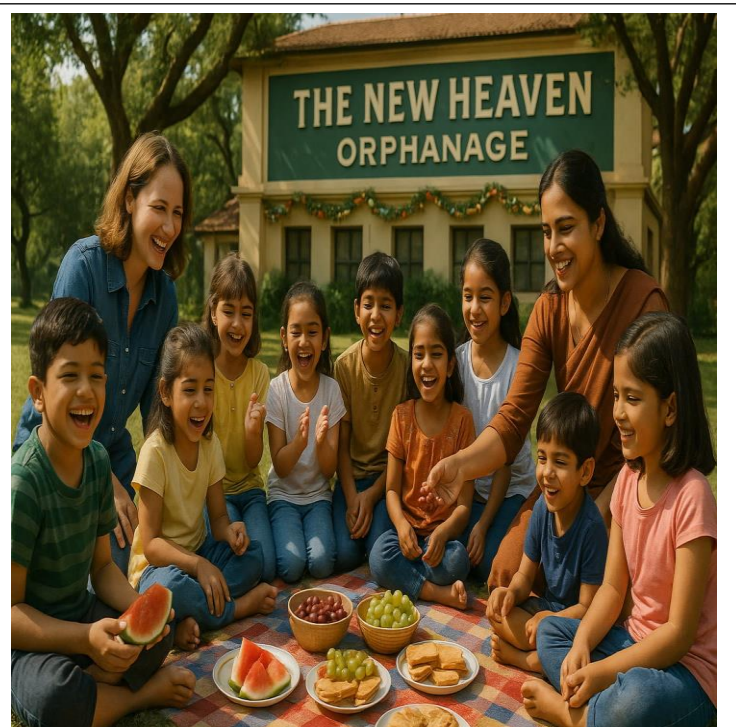
An Orphanage for girls by AWHCF will provide a safe, nurturing home with education, care, and skill-building for abandoned, orphaned, or vulnerable girls, aiming to transform them into independent, capable women by offering Shelter, Nutrition, Quality Schooling, Vocational Training & Emotional Support, often focusing on empowerment and preparing them for a dignified future in society. These homes combat issues like Poverty, Trafficking & Lack of Education, giving girls opportunities they wouldn't otherwise have.



A "Morning Walk by AWHCF Orphanage" usually refers to a visit, often organised by schools or individuals, to bring joy, support and awareness to children in orphanages, involving activities like sharing snacks, playing, or donating essentials, but it can also be a poignant personal story about a last walk before entering one, highlighting themes of childhood innocence and compassion, or even a metaphorical walk with rescued animals at an elephant orphanage, all emphasising empathy, community and the impact of small kindnesses.

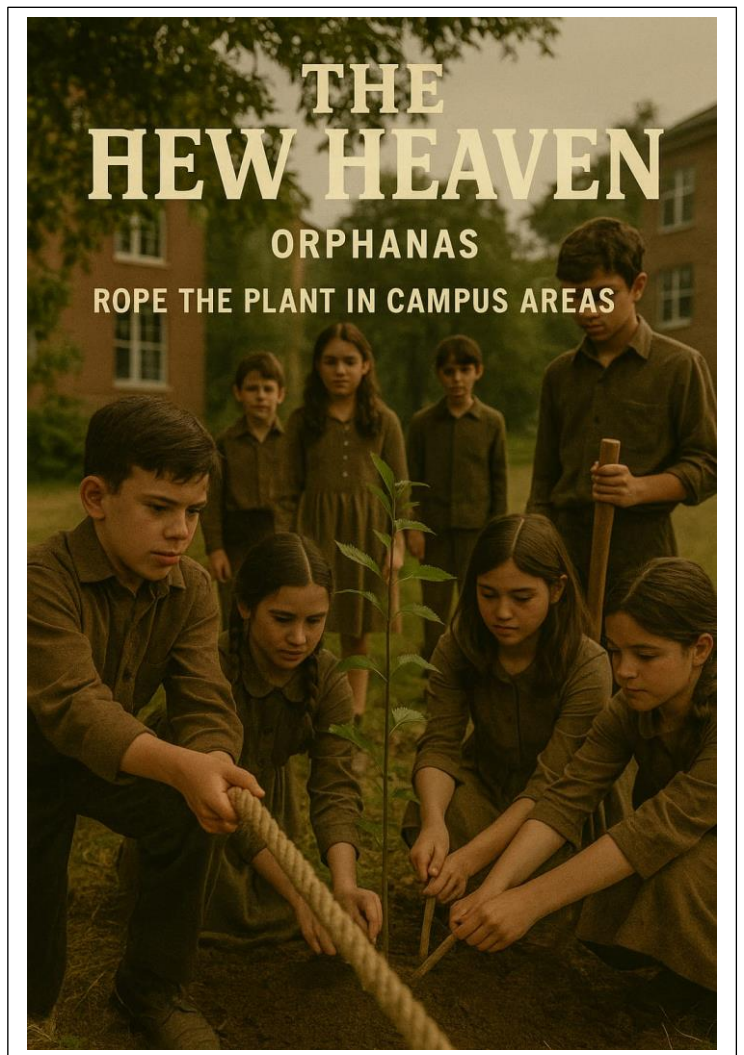


To foster good fruit habits in orphanage children, AWHCF makes fruits accessible (bowls, easy snacks), and makes them fun (colourful presentation, freezing), integrates them into meals (cereal, salsa), offer variety (Berries, Mangoes, Bananas), and links it to fun activities (storytelling, games), all while ensuring regular nutrition assessments to track growth and combat deficiencies.





Plantation by AWHCF orphanages involves Children, Volunteers and organisations planting trees for Environmental Good, Education and Community Building, often linked to causes like Honouring Mothers, Supporting CSR, or Creating Sustainable food/income Sources, Fostering Responsibility & Hope, with projects ranging from small saplings to establishing tree-based farms.



A "Green Environment by AWHCF Orphanage" refers to eco-friendly orphanages or projects that integrate sustainability, teaching children environmental stewardship through features like Solar Power, Rainwater Harvesting, and Organic Gardening and using recycled materials, reducing carbon footprints while providing healthy spaces for children, as seen in projects in India and Nepal. These initiatives build eco-conscious communities and educate youth on conservation, creating self-sufficient, healthy living models.





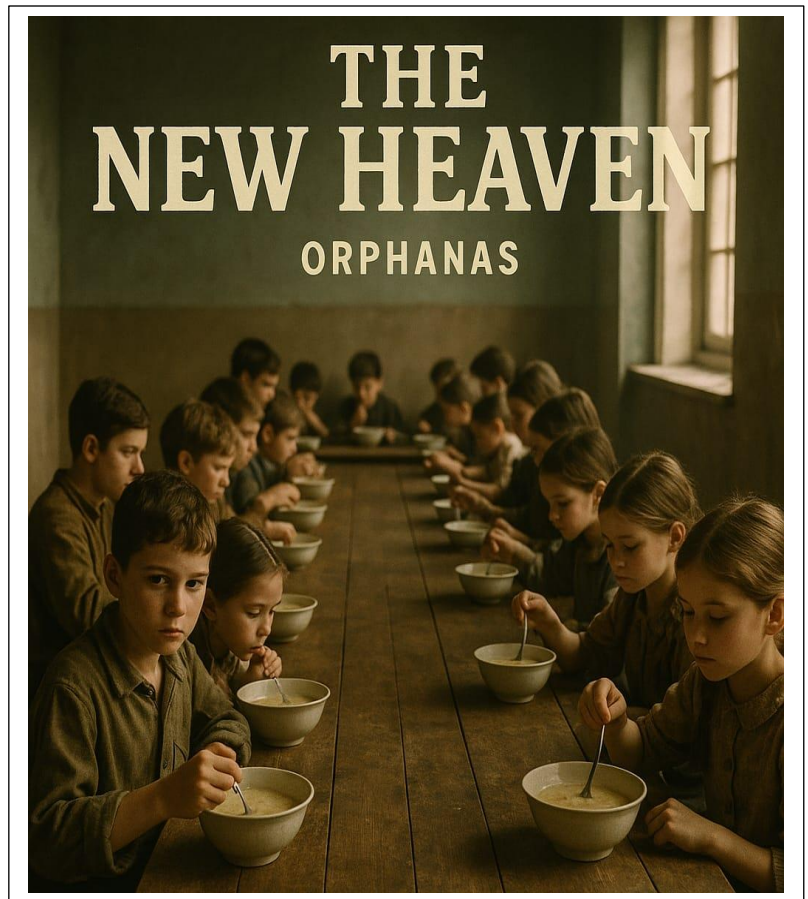
Gardening at AWHCF orphanage provides immense benefits, creating sustainable food sources, teaching vital life skills like responsibility and teamwork, promoting healthy eating, offering therapeutic stress relief, and fostering a connection with nature, often supported by charities providing seeds, tools and training to help children grow fresh produce, manage projects and even fund their education. These gardens become living classrooms and sources of pride, empowering children through hands-on learning and self-sufficiency.



Gardening at AWHCF Orphanage provides immense benefits, creating sustainable food sources, teaching vital life skills like responsibility and teamwork, promoting healthy eating, offering therapeutic stress relief, and fostering a connection with nature, often supported by charities providing seeds, tools, and training to help children grow fresh produce, manage projects, and even fund their education. These gardens become living classrooms and sources of pride, empowering children through hands-on learning and self-sufficiency.



AWHCF Orphanage breakfast programs provide essential daily nutrition, often including local staples like Puri Sabji, Idli, Dosa, Upma or Health Mixes, to ensure children are healthy, focused, and ready to learn, combating malnutrition and improving school attendance and performance, with major organisations like Akshaya Patra and Annapoorna Trust running large-scale initiatives across India, supported by donations for specific meals or annual feeding.



Classroom study for boys in orphanages focuses on basic literacy, core subjects (Math, Science, English), and vital life skills (digital literacy, leadership), often delivered via volunteer teachers, digital platforms (WhatsApp/Meet), or dedicated on-campus schools, aiming to provide essential education, motivation, and support to overcome deficits, ensuring children receive quality learning and opportunities for holistic development alongside emotional well-being.





Classroom study for girls in AWHCF orphanage focuses on providing holistic education, covering core subjects (Math, Science, Languages) alongside life skills, vocational training, and emotional support, often through dedicated on-campus schools or partner NGOs, aiming to build confidence and future opportunities, with programs like India's KGBV or projects on Global Giving supporting this crucial mission to uplift girls from vulnerable backgrounds into self-sufficient individuals.



To teach spoken English, focus on practical communication by building vocabulary (daily use, idioms), essential grammar (tenses, modals in context), pronunciation (sounds, stress, rhythm), and conversational skills through role-play, discussions and real-life scenarios, emphasising confidence and active listening over perfect grammar rules. Use interactive methods like shadowing, games, and situational practice (ordering food, interviews) to make learning dynamic and applicable for daily life.



To teach spoken English, focus on practical communication by building vocabulary (daily use, idioms), essential grammar (tenses, modals in context), pronunciation (sounds, stress, rhythm), and conversational skills through role-play, discussions, and real-life scenarios, emphasising confidence and active listening over perfect grammar rules. Use interactive methods like shadowing, games, and situational practice (ordering food, interviews) to make learning dynamic and applicable for daily life.



For orphanage girls' lunches, focus on nutritious, varied meals like Daal, rice, veggies (like beans, plantain), and sometimes chicken/sweets, ensuring protein, vitamins, and fun elements; you can provide this through direct donation/sponsorship via NGOs like PEP Hands or Amma Odi, by bringing items like fruits/snacks, or by supporting organisations that offer varied diets for healthy growth.





Many high school students in urban areas are introduced to computers and take computer classes at their high school. In rural areas where Anh Dao is located, however, these resources are harder to come by. Through the kind donation of JL Support Services, the older orphans at Anh Dao can now learn about computer technology at their own computer lab. The skills they learn will empower them to become more successful as they grow older, and the increased support in education has shown to be vital in breaking the cycle of poverty that exists in rural communities.



**The Promote Girls Education** program aims to provide educational facilities for them by setting up a computer lab inside the orphanage with 24 computers with a desk and chairs. This lab will also have a television to facilitate smart learning. To educate these girls how to rightfully use this technology, we are also appointing a teacher who will be a trained professional in the field. This will be done to promote computer literacy amongst these girls and they can also learn how to become digitally sound for better employability.





Great games for AWHCF orphanage children include classic active games (Simon Says, Red Light Green Light, Tag, Musical Chairs, Obstacle Courses, Sports), creative/quiet activities (Pictionary, Charades, Origami, Building, Put on a Play, Drawing), and simple group fun (Hot Potato, Balloon Games, focusing on teamwork, imagination and using readily available items like balls, paper, and music.



For girls in AWHCF orphanages, fun and engaging entertainment includes creative arts (drawing, crafts, puppet shows), active games (dance, tag, obstacle courses, scavenger hunts), talent showcases (singing, poetry), movie nights, and simple play with dolls/stuffed animals, focusing on activities that build teamwork, self-expression, and confidence, adaptable for different ages with both low-cost/no-cost options like card games or outdoor relays and bigger events like sports days or themed parties.



For AWHCF orphanage children, nutritious and energising snacks like Fruit Skewers, yogurt, granola bars, roasted Chana (Chickpeas), Poha (Flattened Rice), or simple homemade items like Banana Bread/Paneer wraps are great choices, balancing health with fun and energy for studies, alongside shelf-stable options like biscuits, crackers, dried fruit, and nuts.



Music classes for orphanage children offer immense therapeutic and developmental benefits, helping with emotional regulation, focus, and social skills, and can be organized by contacting local NGOs, music schools (like some in Siliguri), or specialized charities such as All Kids Need Music, using simple instruments like drums, xylophones for engagement, and focusing on group activities.





Creating a library for children in an orphanage provides essential literacy, imagination, and educational opportunities, often through donations, community support, and dedicated programs like those found on Global Giving or Donate-a-Book. Key steps involve gathering age-appropriate books (storybooks, Encyclopaedias), organising them, and fostering a reading culture, with organizations focusing on children's welfare often seeking volunteers and book donations to achieve this.



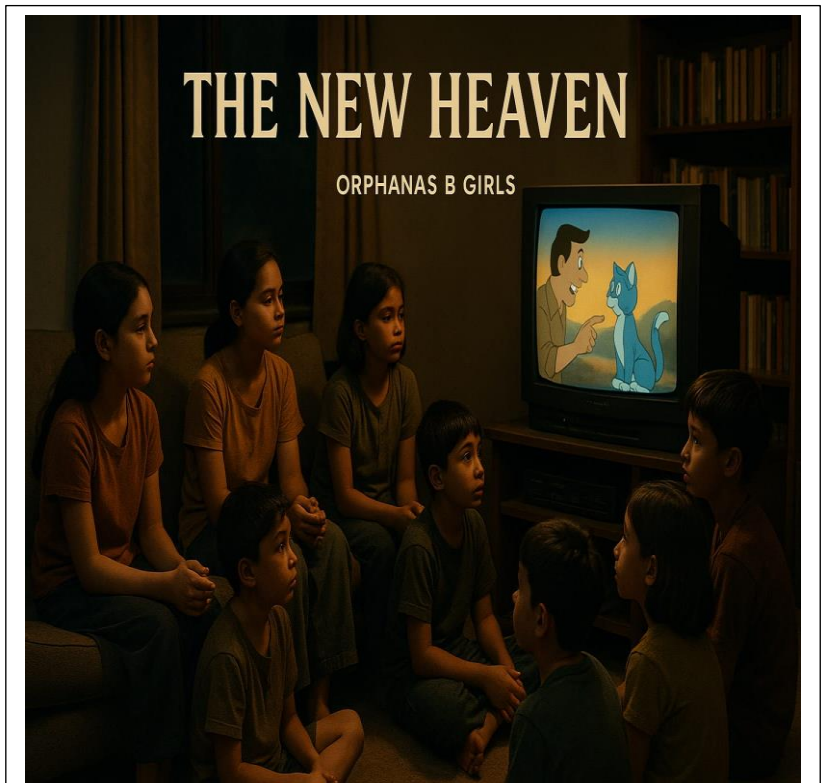
AT AWHCF A prayer for children focuses on God as a Father to the fatherless, asking for His love, protection, provision (food, shelter, education), healing from trauma, and a sense of belonging, asking Him to fill their void with hope, purpose, and a future, and to raise up caregivers and families for them. Prayers often cite scriptures like Psalm 68:5 ("A father to the fatherless") and Jeremiah 29:11 ("plans to prosper you").



Providing dinner for orphanage children involves sponsoring meals through NGOs like Akshaya Patra Foundation or Amma Odi, donating nutritious food items (grains, lentils, fresh produce) to orphanages, or directly supporting local orphanages like PEP Hands in Siliguri who arrange meals for kids. Meals should focus on nutritional balance, often including staples like rice, dal, vegetables, and sometimes chicken or eggs, providing warmth, energy, and hope for children in need.



For children in orphanages, great movie & entertainment options include uplifting films like Taare Zameen Par, A Little Princess, The Secret Garden, and animated classics (\*Toy Story, Lion King, Finding Nemo) for joy, along with interactive games, storytelling, puppet shows, sports, art, and donated books/toys, focusing on themes of resilience, friendship, and finding family. The goal is positive engagement, memory-making, and fun, using movies that inspire hope and activities that build connection.



Orphanages provide sleep time for children based on general pediatric guidelines, varying by age (e.g., 9-12 hours for school kids, 8-10 for teens), but the actual routine involves fixed bedtimes and wake-up calls, often with shared dorms and varied sleeping arrangements, sometimes even fostering closeness rather than needing individual rooms, though needs differ.



An awareness program for children in AWHCF orphanage focuses on holistic development, covering essential life skills, health, hygiene, education, emotional well-being, and child rights, often involving community support, skill-building workshops (reading, creativity), and sensitization to nature, aiming to build resilience, self-esteem, and a positive future, preventing exploitation, and encouraging reintegration where possible.



Celebrating Teachers' Day at an orphanage involves creating joyful, engaging activities for the children and honouring their caregivers, focusing on fun, learning, and appreciation through games, performances, gifts (like books, art supplies, healthy snacks), and shared meals, making it a day of connection and spreading love, not just a traditional school event. You can organize talent shows, creative workshops, fun games like musical chairs, and gift the caregivers, recognising them as mentors who guide these young lives.





For a memorable Republic Day at an orphanage, focus on patriotic activities like flag hoisting, tricolour crafts, storytelling, patriotic songs/dances, and fun competitions (fancy dress, drawing), combined with distributing essential school supplies or treats, sharing meals, and fostering a sense of community and national pride through interactive sessions about India's constitution and freedom fighters, creating joy and lasting memories for the children.



To celebrate Independence Day with orphanage children, organise engaging, patriotic activities like a flag ceremony, cultural performances (dances, songs), patriotic art/crafts (tricolor), storytelling about freedom fighters, fun games (scavenger hunts, kite flying), and share treats, all focused on fostering national pride, joy, and a sense of belonging, making it memorable and inclusive.





Celebrating "Parents' Day" at an orphanage for kids who lack parents needs sensitivity; focus on creating loving, inclusive activities that build self-worth, not highlight absence, by involving caregivers/volunteers as parental figures through shared baking, games (like biscuit-eating contests), educational fun, donating essentials (food, books), and creating happy memories with performances, focusing on love, support, and building character, rather than just cake and external gifts.



For Mother's Day in an orphanage, focus on celebrating the women who are mothers to the children (caregivers, aunties, staff) and creating warmth for those missing their own moms through activities like handmade gifts (frames, cards, flowers), shared meals, talent shows, storytelling, planting flowers, or even a "memory lane" activity, emphasizing love, appreciation and the concept of chosen family to provide joy and connection.





Celebrating Friendship Day at an orphanage involves fun, creative, and bonding activities like making friendship bands/bracelets, creating a "Friendship Wall" collage, sharing stories, playing games (indoor/outdoor), baking treats together, and a special meal/cake cutting to foster love, empathy, and unity among the children, making them feel valued and connected.

Celebrating a child's birthday at an orphanage brings immense joy and involves coordinating with the home to provide meaningful gifts, food, and activities like games, focusing on sharing happiness rather than highlighting differences, often by sponsoring meals or essentials, playing games, and bringing toys/books/clothes, making it a truly rewarding experience for everyone involved.







Celebrating Holi with orphanage children involves bringing colours, sweets, food, and fun activities like music, dancing, and games to share the joy of the festival, ensuring a safe environment with non-toxic colours and creating lasting happy memories for them, often organised by NGOs or individuals who donate supplies and time.

Celebrating Christmas at an orphanage involves creating a festive, loving atmosphere with activities like caroling, cake cutting, decorating, games, and gift-giving (books, toys, essentials) to make children feel special and remembered, focusing on joy, teamwork, and sharing rather than just presents, often through volunteer involvement and donations.



Careers for children from orphanages can mirror general careers but often focus on supporting skills, education, and well-being, leading to roles in **Childcare, Education, Healthcare (Therapists, Nurses), Social Work, Administration** and even **Fundraising/Non-Profit Management**, leveraging personal experiences for empathy in fields like **youth development, counselling, or community service**, with many opportunities in established organisations like SOS Children's Villages or UNICEF, requiring skills from teaching and therapy to organisational management.

## Education & Youth Development

- **Teacher/Educator:** Inspiring future generations.
- **School Counselor/Psychologist:** Helping students with emotional and academic challenges.
- **Youth Specialist/Mentor:** Guiding young people through life transitions.
- **Learning Mentor/Special Needs Support:** Providing individualised academic help.

## Healthcare & Therapy

- **Pediatrician/Nurse:** Caring for children's physical health.
- **Child Development Therapist:** Focusing on developmental milestones.
- **Speech-Language Pathologist:** Improving communication skills.
- **Behavioral Specialist/ABA Therapist:** Addressing behavioral needs.

## Social & Community Support

- **Social Worker/Case Manager:** Advocating for children's rights and well-being.
- **Family Support Worker/Advocate:** Reintegrating children or supporting foster families.
- **Child Protection Practitioner:** Ensuring child safety.
- **Community/Project Worker:** Developing local support programs.

## Management & Administration

- **Orphanage/Childcare Administrator:** Overseeing daily operations.
- **Fundraising/Development Officer:** Securing resources for child welfare organisations.
- **Adoption Specialist:** Facilitating family placements.

## Creative & Technical Roles

- **Content Marketing Specialist:** Helping non-profits share their stories.
- **Librarian (Children's):** Promoting literacy and reading.





**IPS Officers**

**IPS Officers**





**Physicians**

**Physicians**





**Advocates**

**Lady Advocates**







**Engineers**

**Women Engineers**





**Male Professionals**

**Professional Women**





# IPS OFFICER, DOCTOR, ADVOCATE AND BIG BUSINESS MAN HELP TO ALL CITIZENS



THANKING YOU